
Module 1: Software Installation and System Set Up

Installation and Setup

Training Resource Requirements

Please have a PC workstation available for each student attendee with administrative rights to install software and hardware drivers, USB or Parallel port enabled, and password to reboot the system. If passwords and admin rights are prohibited to students and trainer, please have a member of your IT staff present at the start of the first day of training to assist with the training software installation.

The Designer training course offers hands-on lab assignments that require an additional method of soft-proofing the VIPP resource output prior to printing. Each student PC should be equipped with one of the following: Adobe Acrobat Distiller 8.0.1 or later, Xerox FreeFlow VI Explorer, Xerox FreeFlow VI Designer, or Xerox FreeFlow VI PDF Originator.

Lab resource files (Proform Designer software installation, Proform Designer training dongles, sample lab data, lab image files, lab fonts, lab text files) will be supplied by the Lytrud Software Training Instructor.



Soft-proofing using Adobe Distiller will also require the installation of the FreeFlow VI Interpreter (VIPP Core Interpreter installation CD) on the workstation PC. It is not required to have a VIPP license on the workstation to install VIPP for *.pdf proofing.

Designer Installation System Requirements

The minimum PC system requirements to run Designer are as follows:

- Microsoft Windows operation system version 95, 98, 2000, NT [ver. 4.0 and above], Millennium Edition [ME], XP, or Vista
- PC user rights for periodic access to and editing of system registry during software operation
- 256 MB of RAM
- 1 GB hard disk space
- CD-ROM Drive
- Two-button mouse
- Parallel or USB Port enabled (for license dongle)
- Pentium IV 2.8Ghz/AMD Athlon 2800 MHZ or faster processor (recommended)
- 17" Super VGA monitor or larger (recommended)
- Internet access and software *.exe download rights for Automatic Software Update Service

Installing Designer

Installation of the software requires PC administrative rights that enable the installation of software, access to the system registry, and installation of a device driver for the dongle.

❖ To install Designer (parallel port dongle)

- Attach the parallel port dongle to the system prior to the initial boot up before installing the software.
- Insert the installation CD to the CD ROM drive. An automatic setup menu will appear. Follow the directions on the menu. International versions of the software will offer the installation in the English, French, German, Spanish, or Italian languages.

❖ To install Designer (USB dongle)

- Insert the installation CD to the CD ROM drive. An automatic setup menu will appear. Follow the directions on the menu, but do not attach the USB dongle during the software installation. International versions of the software will offer the installation in the English, French, German, Spanish, or Italian languages.
- Reboot.
- Attach the USB dongle and use the Windows New Hardware Device Wizard (should automatically appear in WinXP or later O/S) to find a driver for the USB dongle.



If the installation wizard does not automatically launch, run the setup.exe program from the CD.



Multiple software licenses are required for multiple users.

To Launch Designer



Double-click the Designer icon on the Windows desktop or select the Designer product from the Windows **Start, Programs** menu.

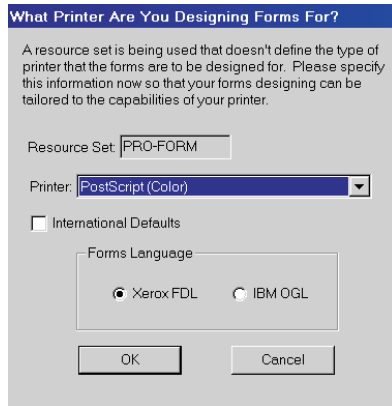
What Printer are You Designing Forms For?

The first time Designer is launched a prompt will appear requiring the selection of a type of printer and forms language.

This training course requires output to PostScript VIPP. Please select the following:

- Printer: PostScript (Color)
- Forms Language: Xerox FDL

The International Defaults check box will enable international units of measurement and paper sizes. If this box is checked, Designer will automatically default to A4 as paper size, millimeters as page size unit, centimeters for all rulers, and 40 channels for OMR.

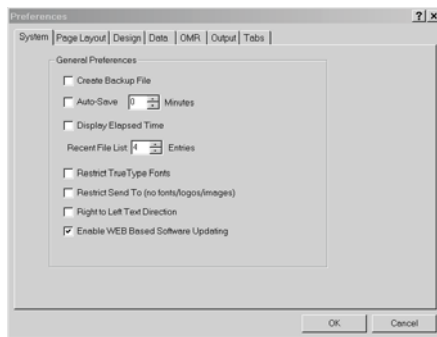


Automatic Software Update Service

Software licenses current on the annual maintenance subscription or Xerox internal licenses are able to download software updates through the Internet. Software updates are available periodically, about every 30 days.

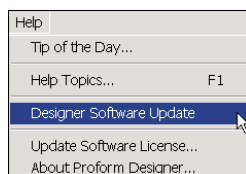
❖ To enable the automatic software update service

1. Go to the **Edit** menu and select **Preferences**.
2. Access the **System** tab.
3. Check the **Enable WEB Based Software Updating** check box.
4. Click **OK**.



❖ To manually update the software

1. Close all form pages or jobs.
2. Go to the **Help** menu and select **Internet Software Update**.



Set Up PDF Proofing of VIPP Jobs

Enabling Adobe Distiller to work with the VIPP Interpreter will allow the proofing of VIPP output to a *.pdf. Designer can output a job directly to a VIPP enabled Adobe Distiller, auto-launching the application for immediate proofing results. If the job is acceptable after viewing the proof, VIPP \XGFC directory printer resources will also need to be generated from Designer to submit the job into production.



Loading the FreeFlow VI Interpreter and editing the Adobe start up file is not necessary if FreeFlow VI PDF Originator (VIPP Thin Printer) is loaded on the local system.



FreeFlow VI Designer (VIPP IDE) cannot be licensed and installed on the local system prior to installing the FreeFlow VI Interpreter (VIPP core) and enabling Adobe Distiller to PDF proof VIPP jobs.

Install Adobe Distiller and VIPP

Adobe Distiller and VIPP must first be installed on the PC workstation. A VIPP license for the workstation is not required for PDF proof printing.

1. Install Adobe Acrobat with Distiller.
2. Uninstall FreeFlow VI Designer (VIPP IDE).
3. Install the FreeFlow VI Interpreter CD. This will automatically create **XGF** and **XGFC** folders on the C: or otherwise specified drive.

VIPP-enable Adobe Distiller

The Adobe Acrobat Distiller startup file must be edited in order to proof VIPP applications.

1. Open the Adobe Distiller Startup file in Notepad. The location & filename will vary depending on the version of Distiller installed.

Anticipated Distiller Startup File location & filenames

| | |
|---------------------|---|
| Adobe Distiller 5.0 | C:\Program Files\Adobe\Acrobat 5.0\Distllr\Startup\example.ps |
| Adobe Distiller 6.0 | C:\Program Files\Adobe\Acrobat 6.0\Distllr\Data\distinit.ps |
| Adobe Distiller 7.0 | C:\Program Files\Adobe\Acrobat 7.0\Distllr\Data\distinit.ps |
| Adobe Distiller 8.1 | C:\Program Files\Adobe\Acrobat 8.0\Acrobat\Data\distinit.ps |

2. Add the following lines at the end of the file:
 - (Loading VIPP from C:\xgf...) print flush
 - (C:\xgf\src\xgfdos) run

3. Save the file and close it.



Please note the previous instructions use the suggested default drive letter and path for the installation of Acrobat Distiller and the VIPP Interpreter. The drive and path may vary.



Adobe Distiller 8.0.x contains a feature that will not allow Designer to create a PDF file. If Distiller 8.0.x is currently installed, use Adobe's free update service to obtain the latest release of version 8.

Prepare Acrobat Auto-launch

Acrobat Distiller is a utility within the Acrobat suite that supports the generation of *.pdf files. Distiller preferences can be set to auto-launch Acrobat to view the newly generated *.pdf.

❖ To set Adobe Distiller Preferences to auto-launch Acrobat

1. Launch Adobe Acrobat Distiller.
2. Go to the **File** menu and select **Preferences**.
3. Check **View PDF when using Distiller** and click **OK**.



Pre-Training Adobe Distiller VIPP Proofing Setup Instructions

The Designer training course offers hands-on lab assignments that can use a viewable *.pdf method of proofing the final VIPP resource output for each application built. If FreeFlow VI PDF Originator (VIPP Thin Printer), FreeFlow VI Designer, or FreeFlow VI Explorer is installed on the local workstation, the following set up and software is not required.

The local workstation will need to have the following installed:

- Licensed Adobe Acrobat with Adobe Distiller (not supported in version 8.0.x)
- FreeFlow VI Interpreter (VIPP Core Interpreter installation CD)

Install FreeFlow VI Interpreter

1. Uninstall FreeFlow VI Designer if it is installed on the workstation.
2. Install the FreeFlow VI Interpreter on the C:\ of the PC workstation (no license file is necessary).
 - Insert the **FreeFlow VI Interpreter Install CD**.
 - The install wizard will guide you through set up.
 - Select No when asked for the license file and complete the installation.

Install Adobe Distiller

3. Install a licensed Adobe Acrobat Distiller.
4. Edit Distiller startup file in Notepad to map to FreeFlow Interpreter source file. Please follow the appropriate steps below according to the version of Distiller that you are using

Distiller 5.0

\Adobe\Acrobat 5.0\Distillr\Startup\Example.ps

Distiller 6.0

\Adobe\Acrobat 6.0\Distillr\Data\distinit.ps

Distiller 7.0

\Adobe\Acrobat 7.0\Distillr\Data\distinit.ps

Distiller 8.1

\Adobe\Acrobat 8.0\Acrobat\Data\distinit.ps

Distiller 9.0

\Adobe\Acrobat 9.0\Acrobat\Data\distinit.ps

Right click and open the file in Notepad to add the following lines at the end of the file:

(Loading VIPP from C:\xgf...) print flush

(C:\xgf\src\xgfdos) run

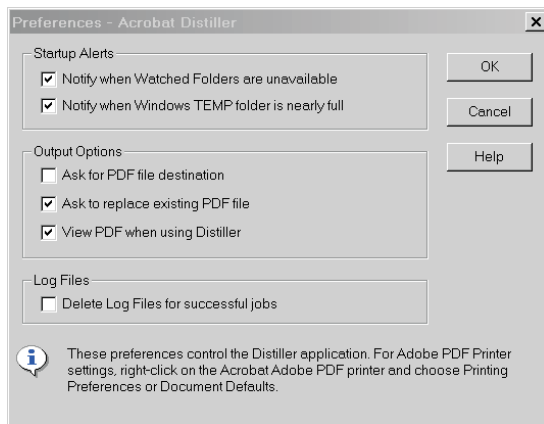


Adobe Distiller 8.0.x contains a feature that will not allow Designer to create a PDF file. If Distiller 8.0.x is currently installed, use Adobe's free update service to obtain the latest release of version 8.

- Using Windows Explorer, find the Adobe Distiller file to edit per the version of Acrobat installed on the system.
- Open the file in Notepad and key in the edits.
- Save changes to file in Notepad and close the edited file.

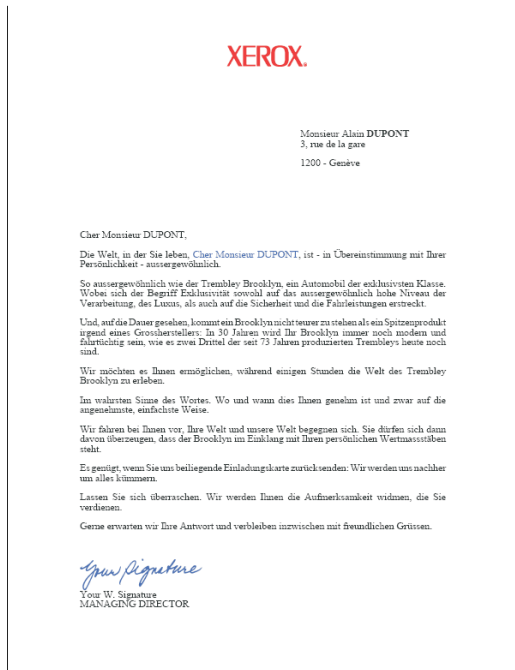
Adobe Distiller Preferences

5. Launch Adobe Distiller and edit the Preferences to auto-launch Acrobat.
 - Launch Adobe Acrobat Distiller.
 - Go to the **File** menu and select **Preferences**.
 - Check **View PDF when using Distiller** and click **OK**.

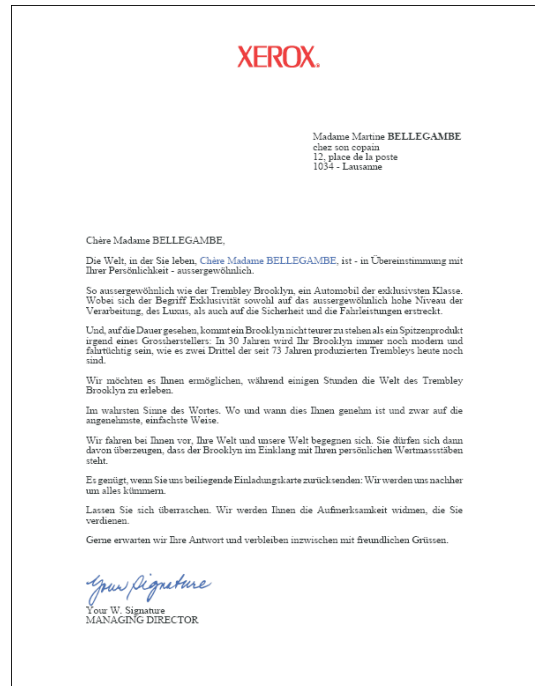


Test PDF Output

6. Launch Adobe Distiller and open C:\xgf\demo\letter.dbf.
 - Launch Adobe Acrobat Distiller.
 - Go to the **File** menu and select **Open**.
 - Go the **Files of type** drop-down menu and select **All files (*.*)**.
 - Go to the **Look in** drop-down menu and browse for **C:\xgf\demo\letter.dbf**.
 - Select **letter.dbf** and click **Open**. Acrobat should auto-launch to show a two page PDF variable letter.



letter.pdf page 1



letter.pdf page 2



FreeFlow VI Designer (VIPP IDE) can be installed and licensed after the installation of the FreeFlow VI Interpreter and the setup of Adobe Acrobat Distiller for VIPP PDF job proofing.