

HOW TO MAKE INTELICUT FLEXMODE TEMPLATE LAYOUTS ADJUSTMENTS

What is Flexmode?

Flexmode allows for additional cutting, creasing and perforating capabilities on your Aerocut Velocity and Aerocut Prime. The majority of Flexmode features are only available to Aerocut Prime users.

Aerocut Velocity

X-Cuts, X-Creases and Y-Cut Columns

Use Flexmode on the Velocity to create cut pieces of varying sizes on a single sheet. With Flexmode you can freely program any combination of up to 20 x-cuts and x-creases.

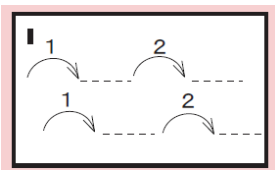
Aerocut Prime

X-Cuts, X-Creases, X-Perfs and Y-Cut Columns:

Flexmode on the Prime allows you to freely program any combination of up to 20 x-cuts, crease **and x-perforations*** and up to 3 y-columns of varying sizes.

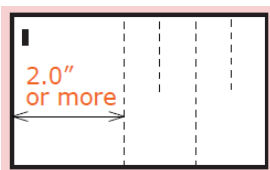
Jump Perfs

Configure up to two y-perfs to jump, allowing you to program each y-perf to have two distinct distances with gaps on either side.



Alternating X-Perf Lengths

Set all x-perfs to alternate between two lengths from the right side of the page when feed edge is looked at in portrait orientation.



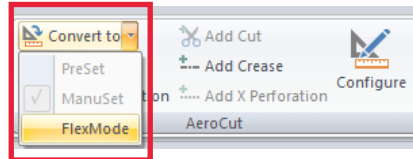
*x-perfs must have 2" or more distance from previous x-perf

How To Create A Flexmode Template

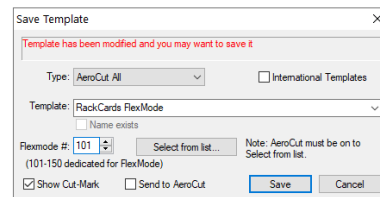
There are two primary ways that you can begin to design a Flexmode Template in Intellicut. Choosing which method to use primarily depends on if you want Intellicut to impose multiple-up similar sized artwork onto the page, or if you want to bring in a full-page sized pre-designed and/or imposed artwork. Intellicut can only impose artwork of the same size, so if you are cutting out objects of varying sizes you will need to fully design the entire artwork file that will be finished. In this case, use the New Job Menu method described below.

Converting Flexmode Templates From Manuset or Preset

If your Flexmode job is also imposing multiple-up similar sized artwork, the best way to create the template is by converting a Manuset template (or Preset if one exists). To do this, create a Manuset template as normal and then use the Convert To dropdown from the Aerocut section of the Home Tab.

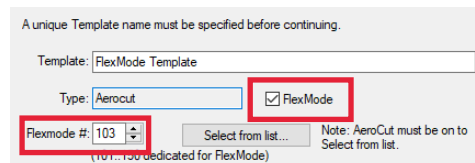


Once you select Flexmode you will be asked to save your template in the Intellicut template library. You can overwrite the Manuset job if you do not plan to create this as a Manuset job again. Or you may rename and save as a new Flexmode Template. Renaming will also retain the previous Manuset job in your Intellicut New Job template library. You will also be asked to select a template number 101-150, be sure to select an available slot from the Select from List button if you are connected to an Aerocut.

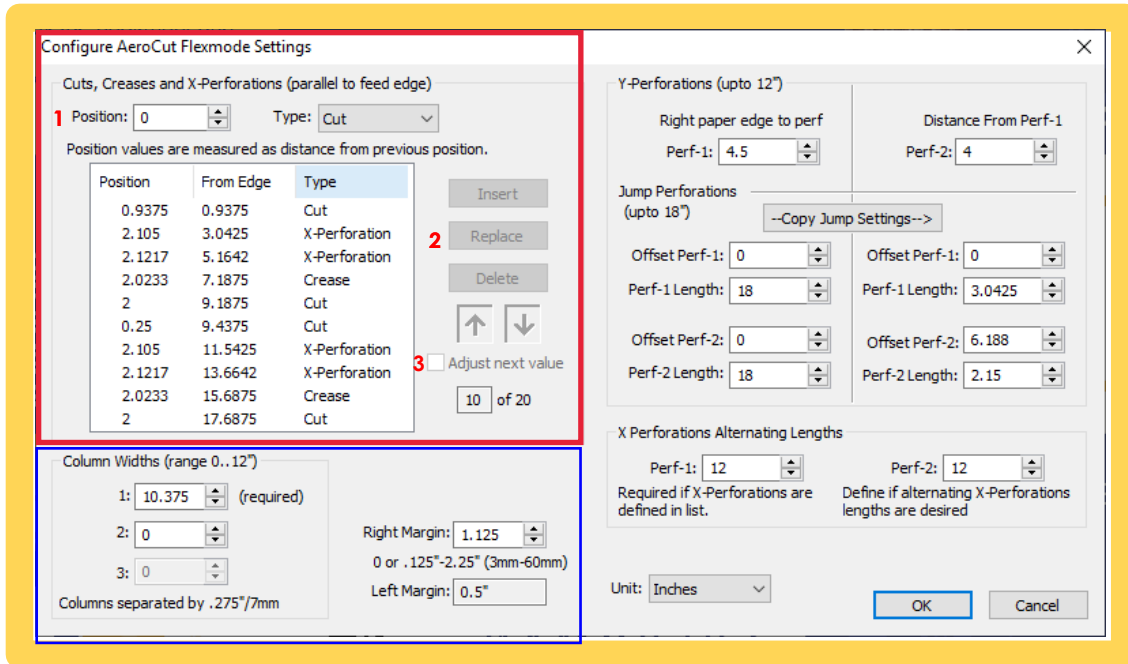


Creating Flexmode Templates From The New Job Menu

You can also create Flexmode Templates from the New Job Menu. Only use this method if you have full size non-imposed artwork. When in the New Job Menu, select custom template as you would when creating a Manuset template. Then tick the Flexmode check-box on and select a valid Flexmode template number.



THE CONFIGURE AEROCUT FLEXMODE SETTINGS MENU



X-Cuts, X-Creases and X-Perfs

The menu circled in red allows you to freely program cuts, creases and perfs in the x-direction (direction parallel to the feed edge). Note that X-perfs are only available in the Aerocut Prime.

You can highlight a value and then update it in the position dialogue box (1). With that value changed select an option to Insert or Replace (2). You may also delete this value all together. When using the insert button, values will be placed **before** the currently selected value.

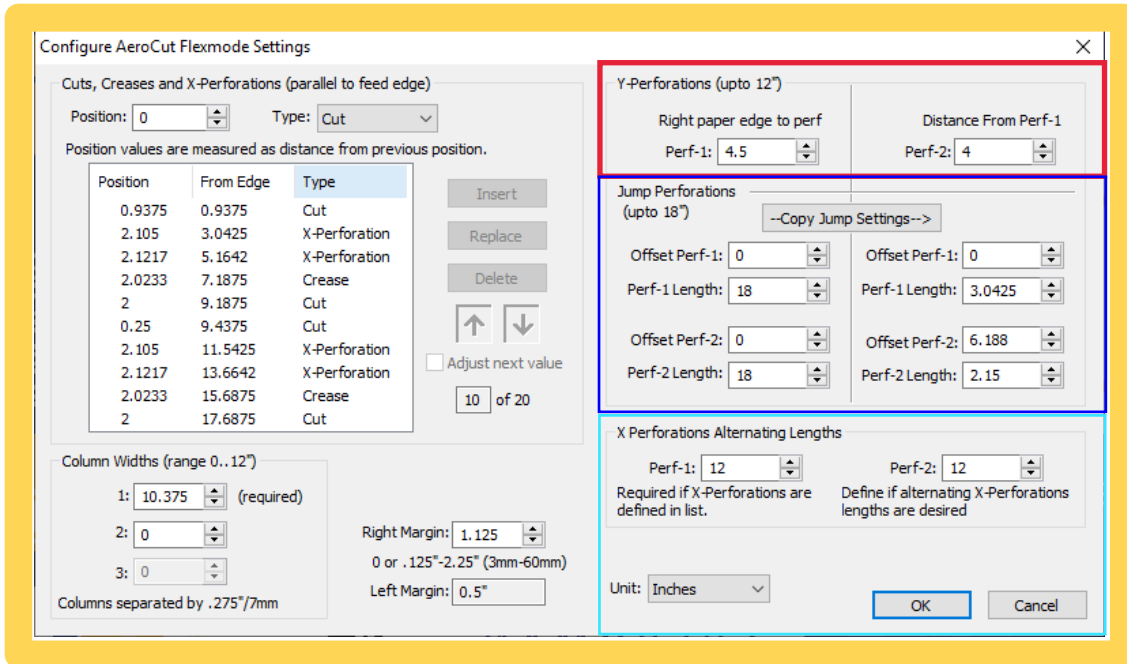
Adjust Next Value (3)

With this setting toggled on, inserting a cut, crease or x-perf will not affect values below it. All values will automatically be adjusted in order that they stay where they were previously placed. With this toggled off, all values below the inserted value will be pushed down based on the added value.

Y-Cut Columns

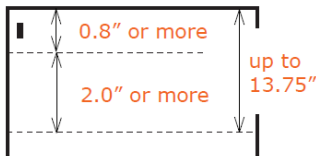
The menu circled in blue allows you to freely program up to 3 y-cut columns anywhere on the page. All columns must be separated by .275. Sections 1, 2 and 3 allow you to program the column widths. The column numbers move from right to left, so column 1 will be the right most on the page. You can also set column 1's margin from the right edge of the paper. The left margin is automatically calculated for you.

THE CONFIGURE AEROCUT FLEXMODE SETTINGS MENU



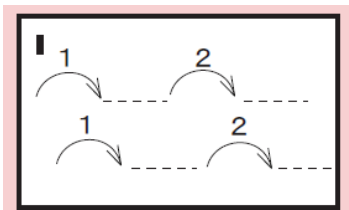
※ Y-PERFORATION!

2 Sets / Sheet



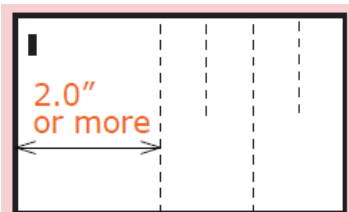
Y - Perforations

The menu circled in red allows you to program the positions of up to two y perfs. Perf-1 is measured from the right edge of paper. Perf-2 measured from distance away from Perf 1.



Jump Perforations

The menu circled in blue allows you to change your y-perfs into jump perfs. Simply set the edge offset (from feed edge) and perf length for the two jumps. You may copy your jumps to Perf-2 if they are the same by using the Copy Jump Settings button.



Alternating Length X - Perfs

The menu in teal allows you to set two alternating lengths for your x-perfs always from the right side of the page (top of the page if in landscape, see image). Set both distances in order for alternating lengths to occur.