

VRCUT READY TRIUMPH GETTING STARTED TIPS

VRCUT SOFTWARE OVERVIEW

The software install kit provided with the VRCut Ready Triumph cutter has two components:

VRCut Impose is the pre-press component that takes your artwork and automatically creates PDF print files with barcodes. This is generally installed on the computer of your pre-press operator, or the individual responsible for creating print files.

VRCut Controller is installed on a PC that is connected to your Triumph cutter through a USB cable. This software provides a **Visual Representation** of the cut sequence for your operators and automatically moves the cutter back-gauge.

HARDWARE REQUIREMENTS

VRCUT CONTROLLER HARDWARE RECS

Required: PC/PC Tablet with internet connection
Operating System: Windows 7 or 10
Screen: 1440x900 minimum resolution is required;
touch screen is preferable

Connection to cutter:

USB Port on PC and a
USB-A to USB-B cable
minumum 6 feet



Hardware We Like! (with Amazon links)

[Microsoft Surface Pro 3](#)

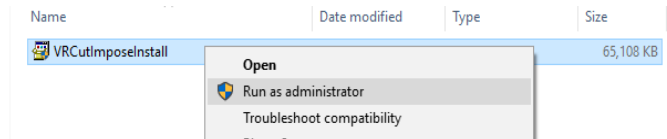
[Dell Latitude 11 5175](#)

[Barcode Scanner: Symcode USB Automatic
with Hands Free Adjustable Stand.](#)

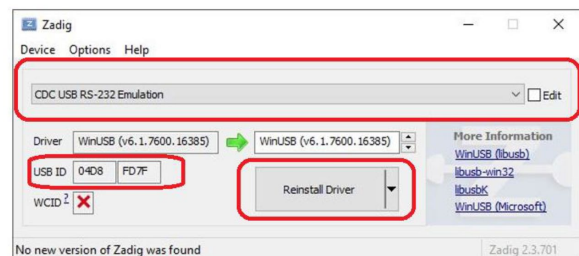
INSTALLATION INSTRUCTIONS

Software Installation:

Download VRCut Controller software as directed on installation kit. Once the download is complete, locate the file and right click and select "Run as administrator". Be sure you have the cutter connected to PC via a USB cable (the port for the "printer" end of the cable in under the cutter in the center).



Near the end of installation, you should be prompted with the message "connect to cutter", select the CDC USB RS-232 Emulation in the drop-down and clicking on the Install Driver (or Reinstall driver) button.



ADDITIONAL CONSIDERATIONS

INSTALLING INTERFACE DRIVER MANUALLY

If you run the installation and don't have the cutter connected to the cutter; you may have to manually install the cutter driver. The driver (ZADIG-2.4.EXE), and directions for installation (Installing USB Driver for VRCut Controller.pdf) can be found in the Program Files (x86)>VRCut Controller folder.

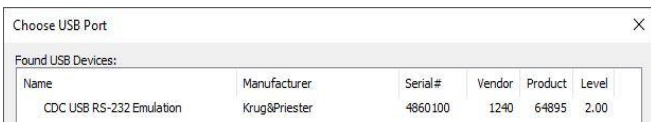
PC/TABLET POWER SETTINGS

In order to avoid drops in connection it is recommended that the VRCut Controller PC Windows sleep setting be set to "Never" in the Power & Sleep system settings and that the laptop/tablet is always plugged in and not running on batteries.

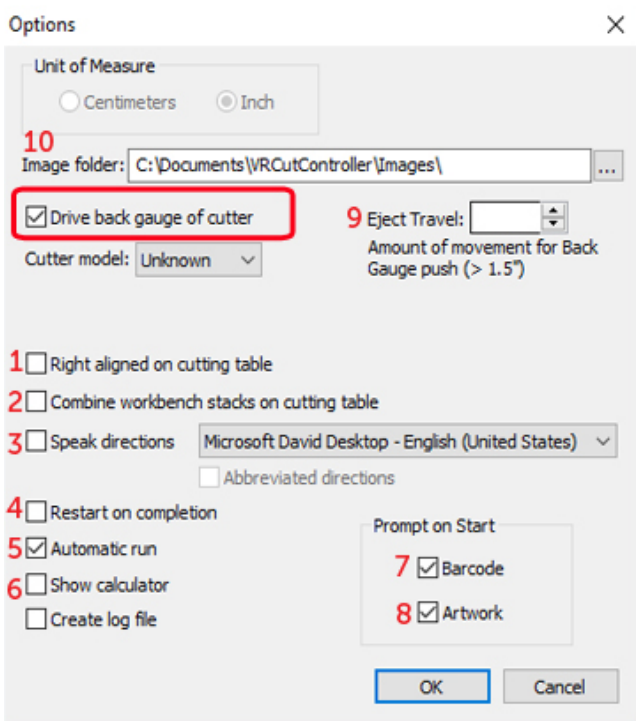
VRCUT CONTROLLER CONNECTION SETUP

CONNECTING TO THE TRIUMPH

Run VRCut Controller from your desktop icon. When you open VRCut Controller the first time after installing the driver, you will need to setup VRCut Controller to drive the back gauge of the cutter. Click on the Options button and verify that "Drive back gauge of cutter" is selected. Click OK. Verify that the cutter is on, you have selected INCHES and START, and the USB cable is attached. Click on the Connect button at the bottom of the VRCut Controller screen. Choose CDC USB RS-232 Emulation and press the Select button. This dialog will close, and this selection should be remembered every time you run VRCut Controller. If you don't see this menu with the Krug&Priester option, then you need to reinstall the driver as explained above.



OPTIONS MENU



1. Right align on cutting table: For the Triumph 5560
2. Combine workbench stacks: If you don't need to have stacks kept separate to maintain stack order

3. Speak directions: Enable voice; select voice
4. Restart of completion: Job automatically starts
5. Show calculator: Displays a floating calculator
6. Create log file: Create a file with any errors
7. Prompt on Start: Barcode - Check to start job with barcode scan
8. Prompt on Start: Artwork - Check to bring up background PDF menu automatically
9. Eject Travel: Sets the default backgauge movement on nudge.
10. Select the default path for the PDF image file for viewing the artwork while cutting (see below)

USING YOUR OWN ARTWORK IN VRCUT CONTROLLER

You have the ability to setup VRCut Controller so that you can select a custom PDF to be used in the guidance display. Typically you would create the PDF in VRCut Impose so you should select the output directory for VRCut impose to be the Image Folder in VRCut Controller. To automatically have a custom image background on job start, turn on option 8 and set the image pathway in option 10 to correspond to the folder with your PDF print files. This will allow you to select the appropriate print file whenever you start a job.

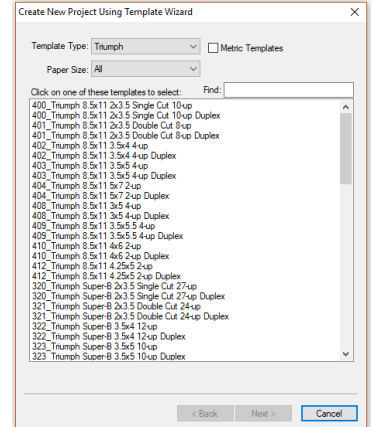
AVAILABLE TEMPLATES

The Job Template List:

VRCut Currently supports 84 standardized templates. These can be found in the VRCut Impose 'New Job' template list, or can be [reviewed on our website here](#).

Ordering Custom Templates:

If a job layout that you wish to use is not currently supported in the template list, [new jobs can be ordered from our website store](#). Talk to your Lytrod Account Executive about complimentary custom templates to get you started.



ANNUAL LICENSING

The VRCut Software requires annual licensing of \$600/year for support, upkeep and ongoing development of the software. This may have been included as part of your hardware lease when you purchased your Triumph Cutter. If not, [you can purchase annual licensing renewal from our website with a credit card](#). When you add to cart and check out, in the additional information field please be sure to include your VRCut License Serial Number.